



# User instructions

## ● Introduction

Thank you for your choice of our product - it is a high-tech while easy to use Digital Microscope. With this unit you may see a unique & “bigger” world.

It is applicable in many fields such as visual inspection on electronic components, and materials in a full range of uses, beauty shop and education.

We recommend you reading this manual FIRST to get the best out of this unit.

## Computer System Requirements:

- Windows 98SE/ME/2000/XP/VISTA
- P4 1.8 or above
- RAM: 256M
- Video Memory: 32M
- USB port: 2.0
- CD-ROM Drive

## ● Technical Specifications

Image Sensor:	1.3 Mega Pixels CMOS, Interpolated to 2 Mega Pixels
Capture Resolution:	1600 × 1200, 1280 × 960, 1024 × 768, 800 × 600, 640 × 480, 352 × 288, 320 × 240, 160 × 120
Color:	24bit RGB
Focus Range:	Manual Focus From 10mm to Infinite
Flicker Frequency:	50Hz/60Hz
Frame Rate	Max 30f/s under 600 Lus Brightness
Magnification Ratio:	20X to 200X
Shutter Speed:	1 sec to 1/1000 sec.
Video Format:	AVI format
Still Image Format	JPG and BMP
White Balance:	Auto
Exposure:	Auto
Light Source:	4 LED White Light
PC Interface:	Mini USB 2.0
Operation System:	Windows 98SE/ME/2000/XP/VISTA
OSD Language:	English
Power Supply:	5V DC from USB Port
Bundled Software	MicroCapture
Size:	110mm(L)X 33mm(R)

- **Install the software**

Insert the driver CD into CD-ROM Drive and this will automatically display the following interface:



- 1. Install the driver by clicking *install Microscope Driver***

A Install Shield Wizard will walk you through the whole process. Click the “*Next*” button to continue.

In this process a message box will appear on the screen. Please click on “*Continue Anyway*”. (Some versions of drivers may not be tested by Windows Lab testing. However it is safe for both your software and hardware)



## 2. Install the MicroCapture software

Click *install MicroCapture software* and then reboot the system when asked.

3. You can also browse the User's manual in PDF format and the CD contents by choosing the corresponding menus.

### Connecting the Microscope to Computer

1. When using a Windows XP operating system, the following “***Found New Hardware Wizard***” screen will appear upon connecting the unit to your PC via the USB port.

Select the “***Install the software automatically (Recommended)***” option and click the “***Next***” button.



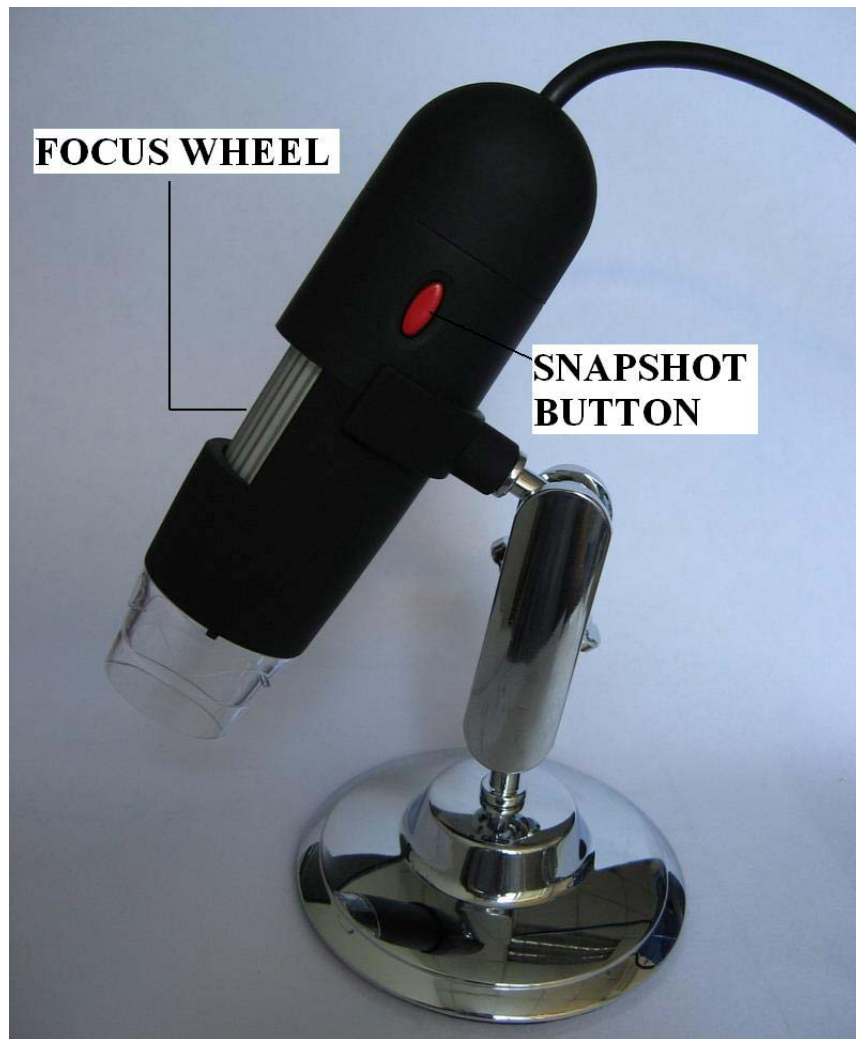
2. Click the “*Continue Anyway*” button on the message box that appears.



3. Click the “*Finish*” button to exit the wizard. Now you may begin to use the Digital Microscope.



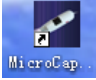
## Quick Look at the Digital Microscope

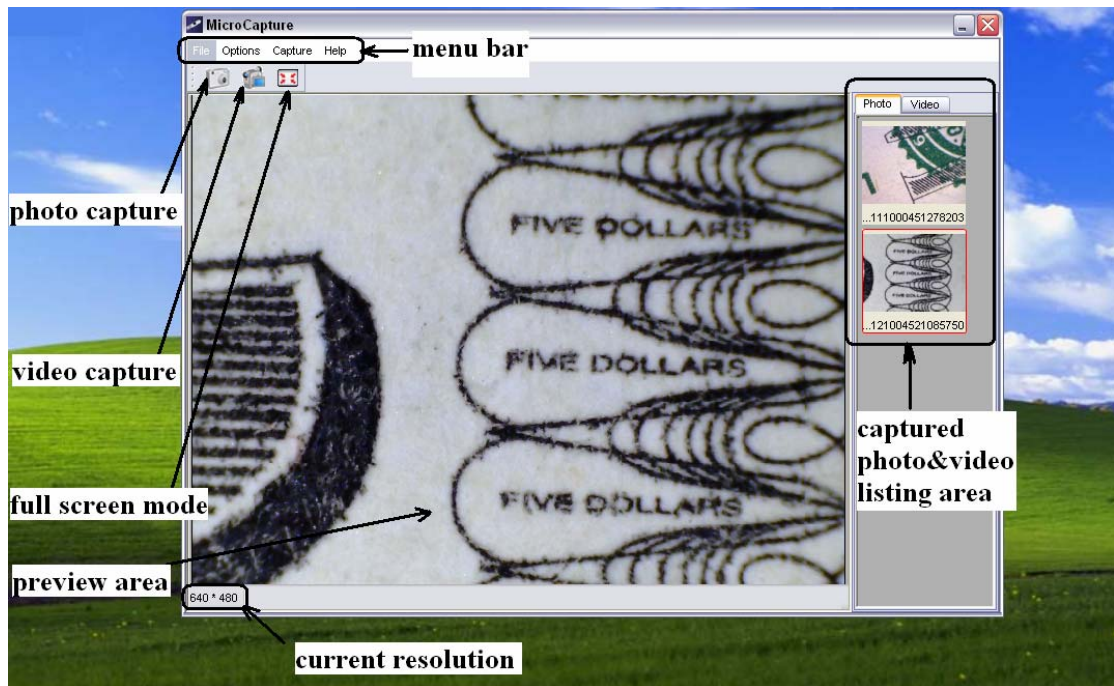


- 1/ Use the FOCUS WHEEL to focus the microscope on the subject.
- 2/ The SNAPSHOT BUTTON enables user capture snapshots by hardware; please refer to photo capture by software later.



- **Start Microscope**

Connect your Microscope directly to your PC USB port, start the software by clicking the icon  generated on the desktop after installation and then you will see the following box popped up.



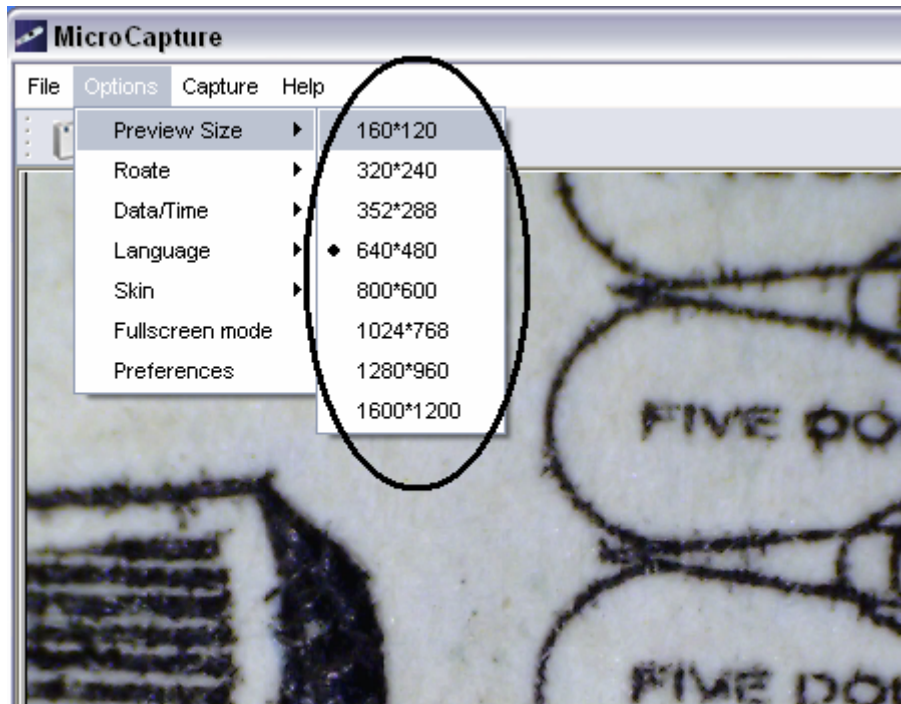
1. Once the Microscope is disconnected from your PC USB port, box showed on Step 1 will pop up as ***“No Device detected, please connect your Microscope directly to your PC USB port.”***

**No Device detected, please  
connect your Microscope  
directly to your PC USB port.**



- **Change preview size**

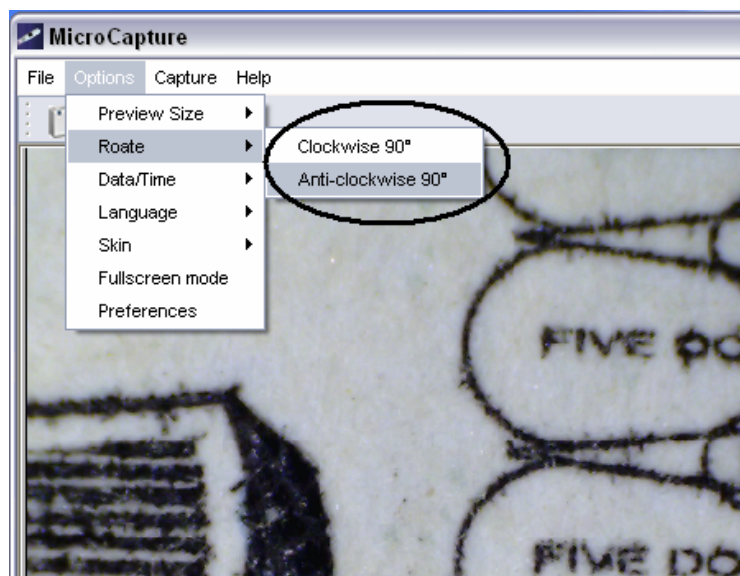
You can change the preview size by the following operation:



**Note: The size of the photo taken is the preview size in which the photo previewed.**

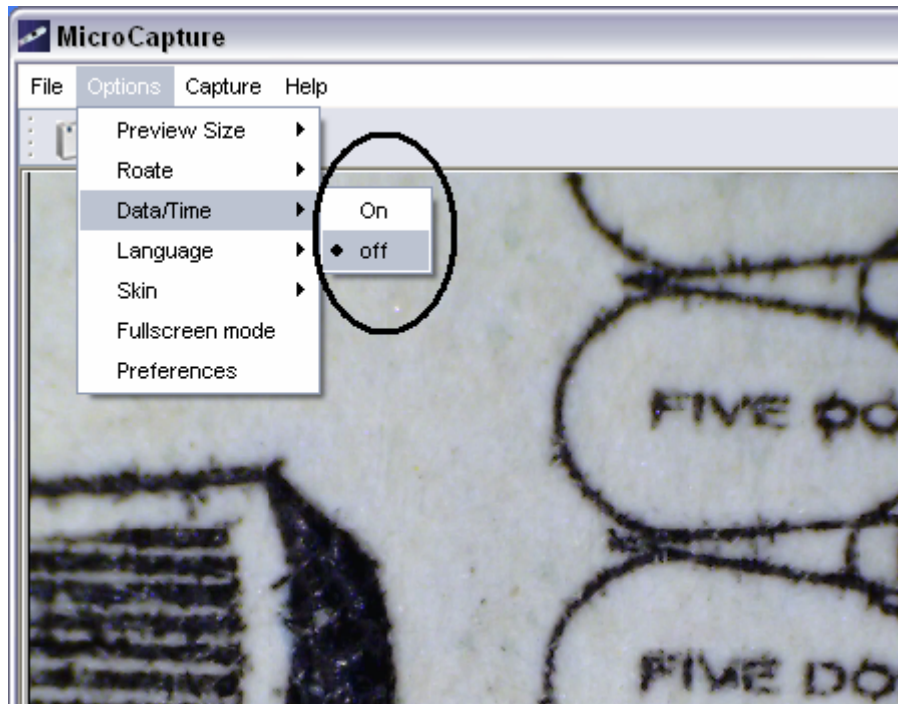
- **Rotate the output image angle.**

You can rotate the output image by clock-wise and anti-clockwise.



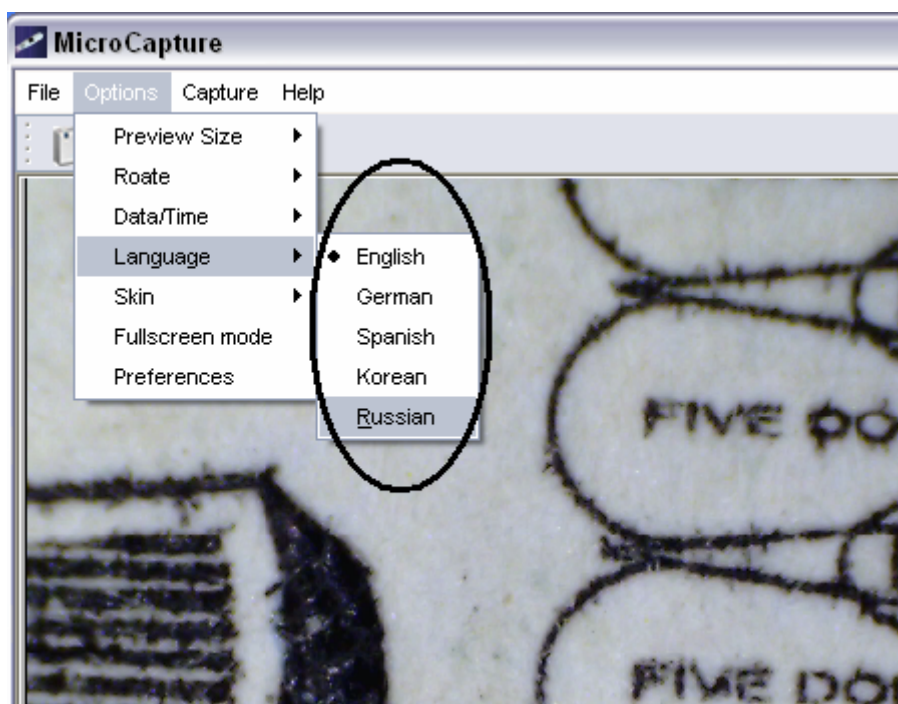
- **Date/Time**

You can display or turn off Date/Time by the following operation:



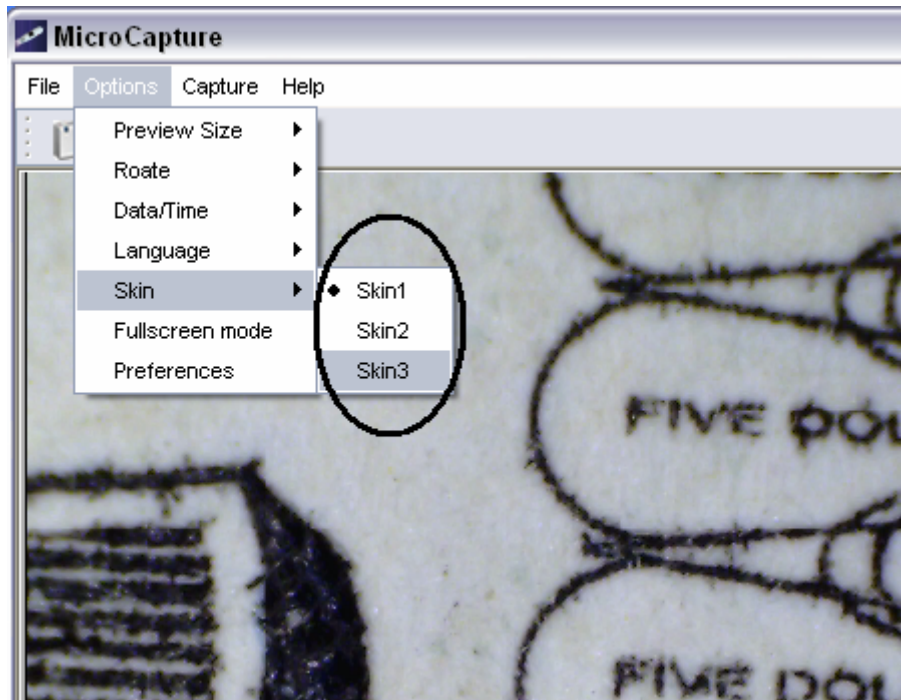
- **Language**

You can choose OSD language by the following operation:



- **Skin**

You can choose the frame style you like by the following operation:



- **Full screen**

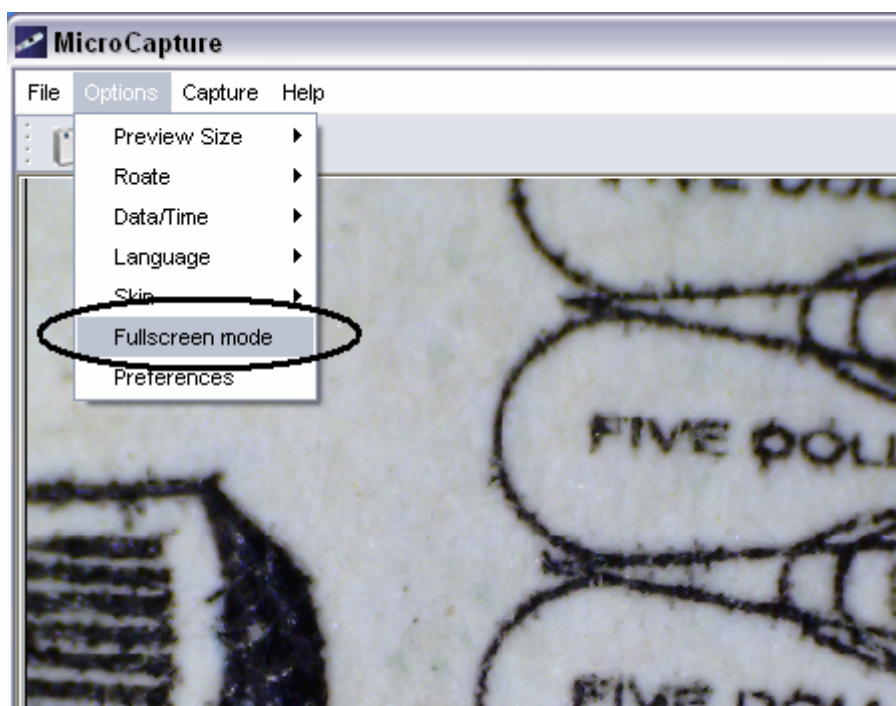
1. You can enter & quit full screen by the following operation:

- 1) Double-clicking the preview area.
- 2) Click the full screen icon:

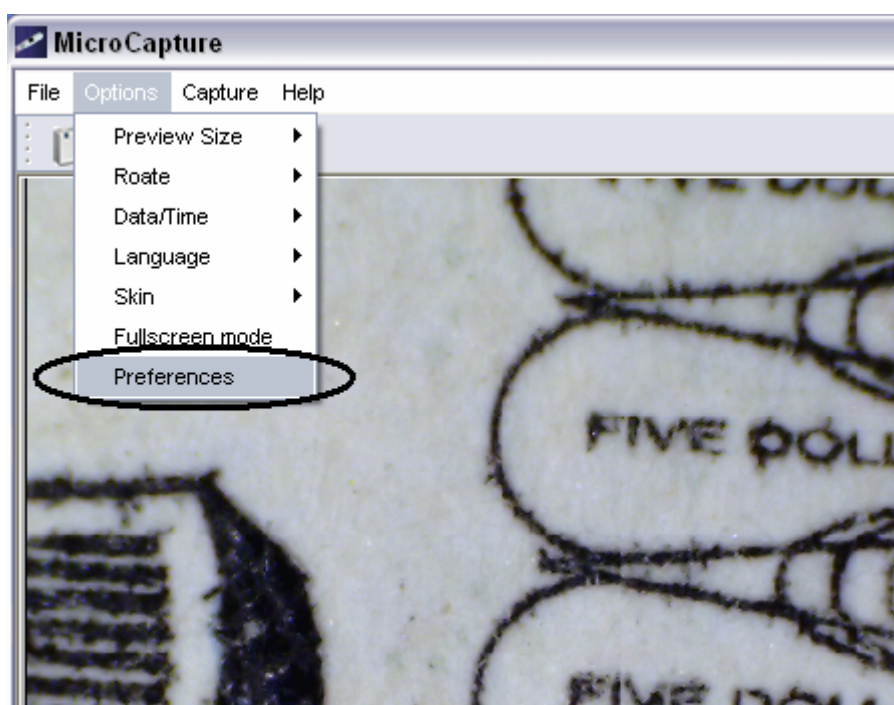


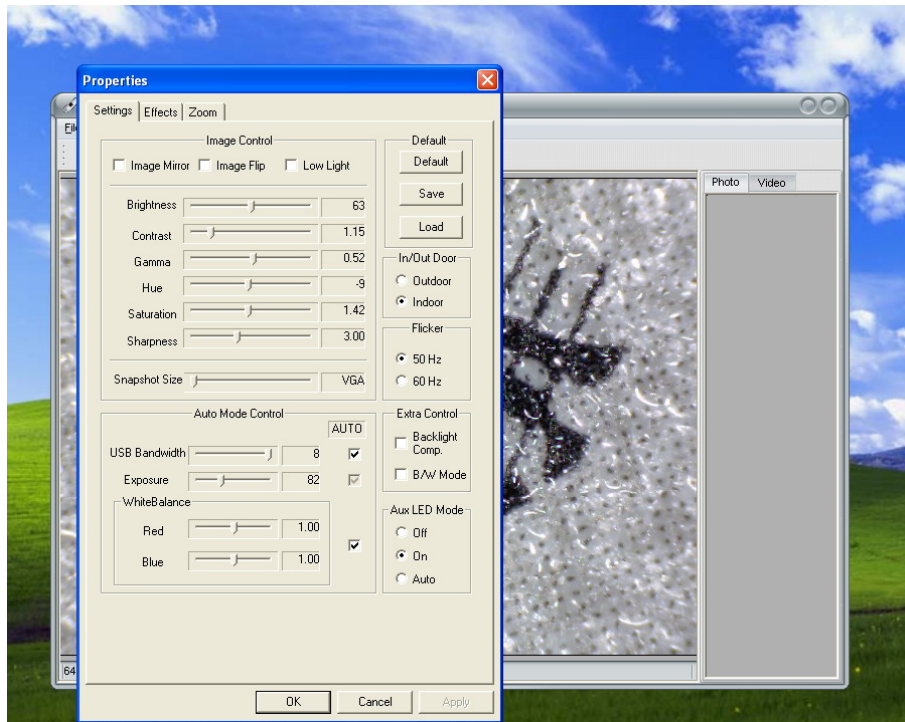


3) Choose **Full screen mode** from menu.



- **Preferences**





Major operations under preferences are as follows:

### 1. LED on/off

You can choose from Aux LED Mode the LED status as ***Off/On/Auto***.


### 2. Brightness

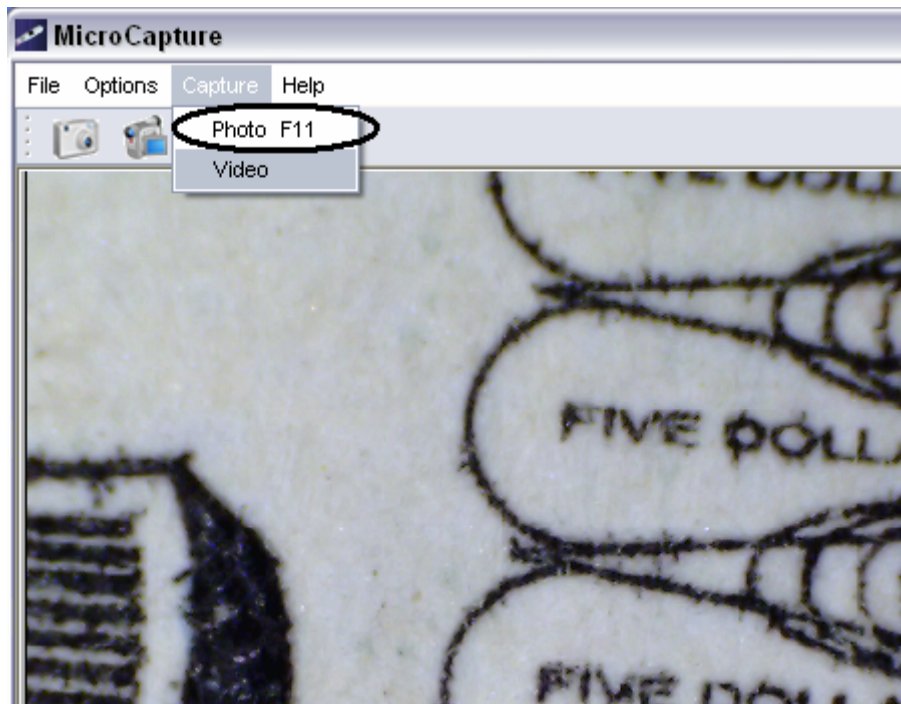
You can adjust the brightness best suitable for object observed.

## ● Capture

### 1. Photo capture

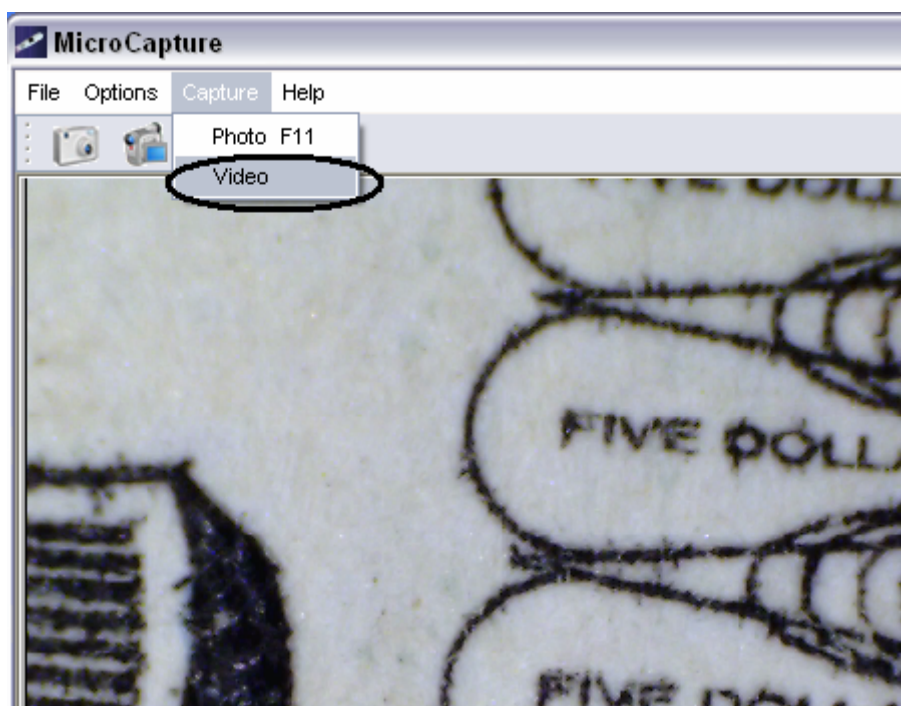
You can take photos by either of the following ways:

- 1) Click the camera button 
- 2) Choose ***Capture*** and then click ***Photo***
- 3) By pressing F11



Photos taken will be saved automatically and listed on the right column waiting for further editing. For editing photo, please refer to later operations.

## 2. Video capture





You can record video by either of the following two ways:

- 1) Click the video camera button 
- 2) Choose from the menu bar ***Capture*** and then click ***Video***

When recording, there is a red dot flashing on the video camera button.



The video is saved in AVI format.

Stop capture:

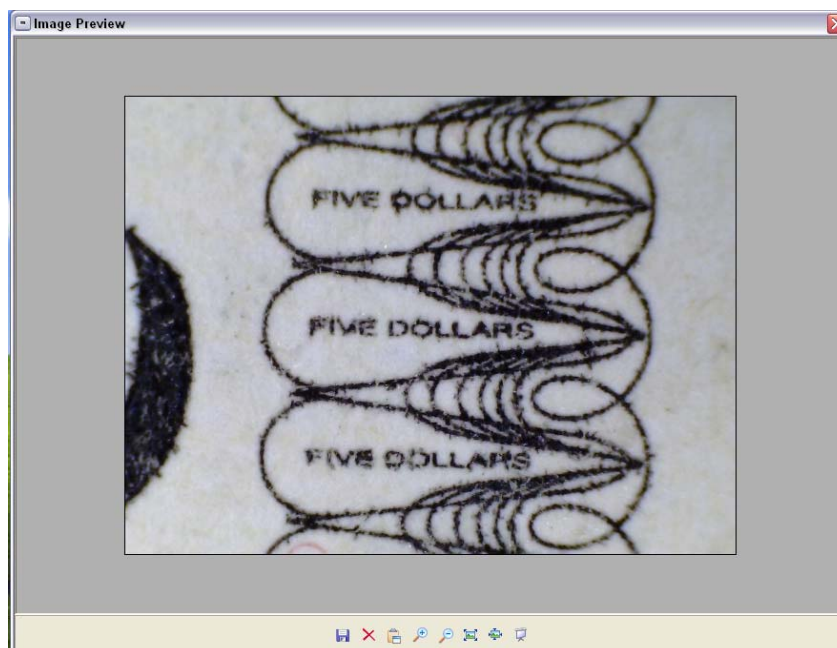
- 1) Click the flashing video camera button
- 2) Choose Capture and then click Stop capturing

**Note: Please note the best pixels for video capturing is 640x480.**

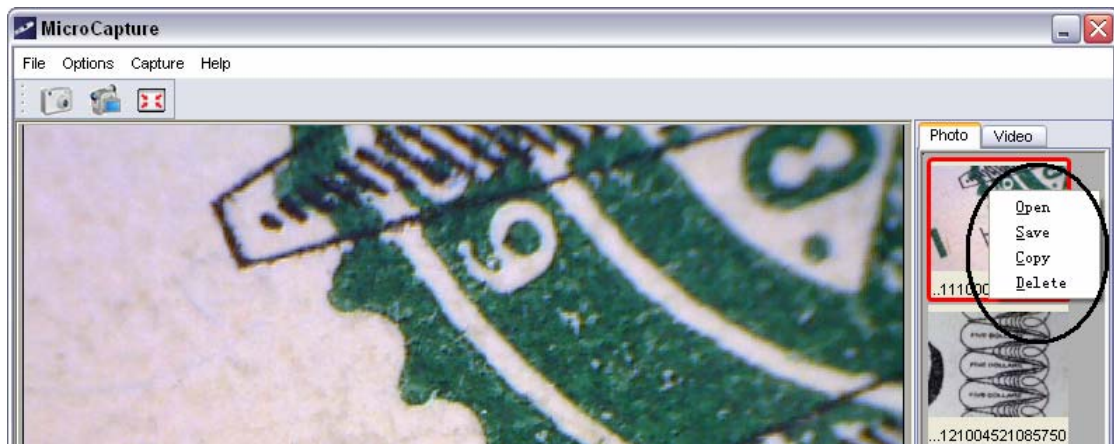
- **Edit photos**

- 1. Preview photos**

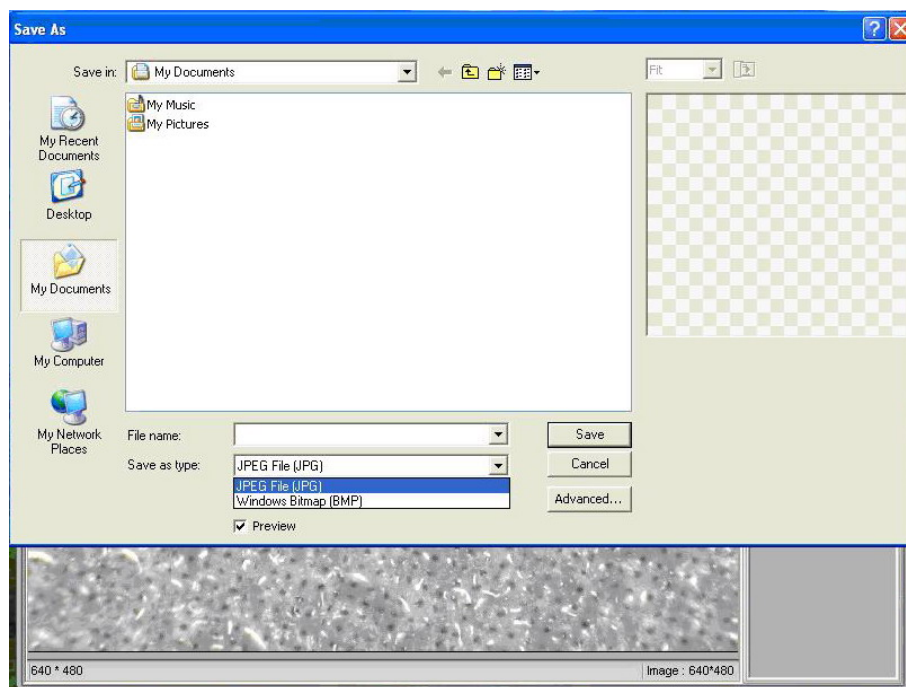
- 1) When putting cursor on the small photo icons listed on the right column, the photo will be displayed at the preview area, with its size showed on the right-end corner.
- 2) You can double click the small photo icon listed on the right column and then an independent preview box will pop up as follows:



## 2. Save photos



You can save photo by right clicking the small photo icons listed on the right column and then choose *Save*.



The file type can be either jpeg or bmp. The jpeg size in which the photo to be saved is the biggest allowed for jpeg. You can choose lower size by entering into Advanced.

### 3. Delete photos

By right clicking and then choose **Delete**, you can delete the chosen photo

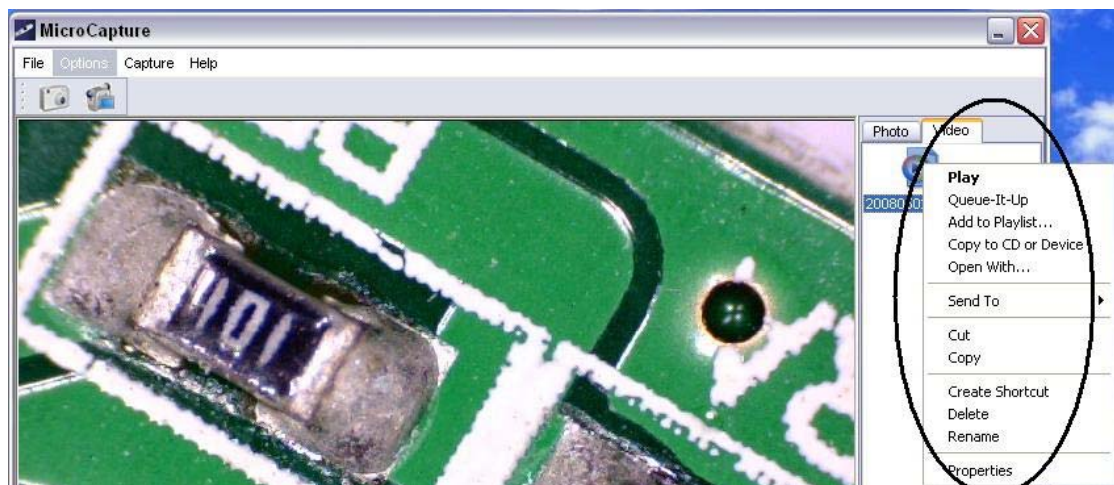
Or, at the independent preview box you can choose delete icon to delete the previewed photo.

### 4. Copy photos

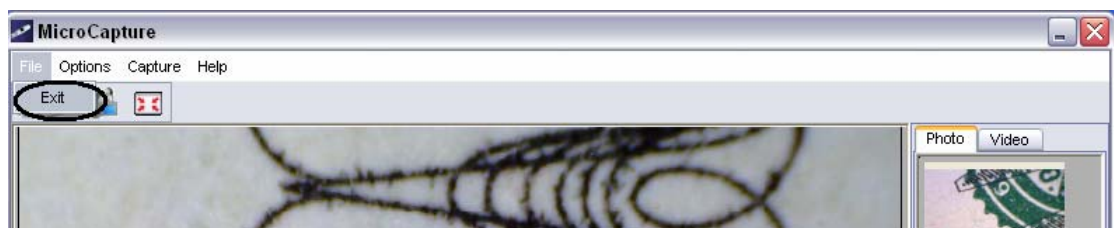
By right clicking and then choose **Copy**, you can copy the chosen photo.

- **Edit videos**

You can right click the video small icon listed on the right column and then choose **Play**, **Copy**, and **Delete** etc.



- **Quit MicroCapture**



- **Tips:**

You can preset the preview window size, output image angle, language etc by editing an .ini file named settings at ***C:\Programs\MicroCapture***.



## Safety:

- The Microscope is non-waterproof, so keep it dry.
- Do not use it in humid place like bathrooms. A dry environment will extend its life.
- User the Microscope only at -5°C-50°C.
- Suddenly temperature change may form dew inside the Microscope, like entering a warm room in cold winter. Put it inside a handbag or plastic bag to slow temperature changes.
- Do not let the Microscope lens face the sun or strong light for a long time. Powerful light may hurt the light-sensitive electronics.
- Avoid touching the lens.
- The white LEDs which illuminate the Microscope target field are very bright. Do not stare directly into these LEDs because it may damage your eyes.
- The clear plastic distance shell sometimes picks up dirt or toxic material from a microscopically observed surface. Be careful touching this to the human skin. Wash carefully or disinfect as needed.
- Do not unplug the Microscope from USB port when LEDs are on. This may cause information loss or circuit damage. Please always close MicroCapture and then unplug the Microscope.